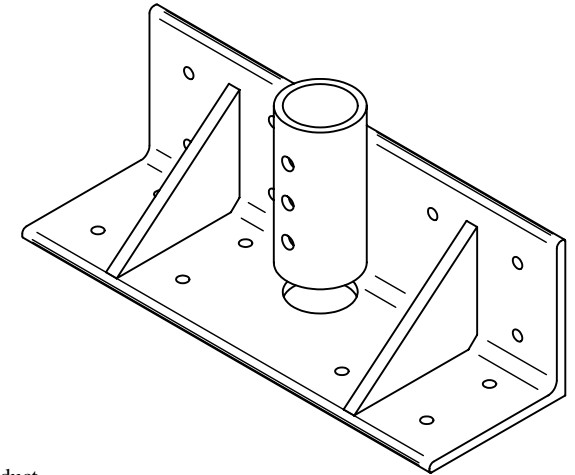
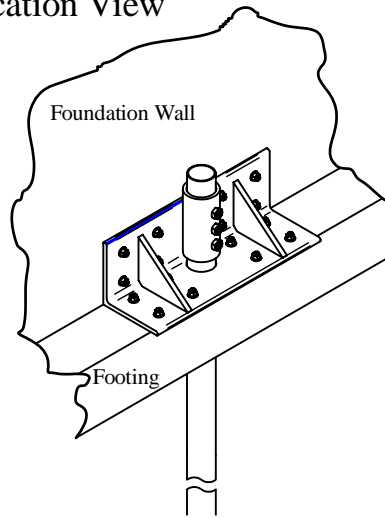




REVERSE ANGLE BRACKET

P/N: MP1006

Application View



The heavy duty Magnum Reverse Angle Bracket is mounted to the face and to the outer toe of a footing or foundation wall using up to 16 concrete wedge anchors. This bracket design minimizes the eccentricity forces applied to the foundation wall during the underpinning process and does not require removal of the toe of the footing. This bracket is compatible with Magnum 3" O.D. 1/8" wall & 1/4" wall structural tubing products for both Steel Push Pier & Helix Foundation Systems.

Note: All dimensions are in inches and shown for reference only. For product specific Engineering Drawings, please contact Magnum Piering Engineering Department.

Product Specification

Material:

Plate to be ASTM A-36 or better; minimum yield strength of 36 KSI.

Tube to be ASTM A513 T5 or better; minimum yield strength of 70 KSI

Weld: 70 KSI minimum yield

Product Weight: 68 lbs

Capacity:

See Magnum Steel Push Piering Technical Reference Manual for specific capacity information.

