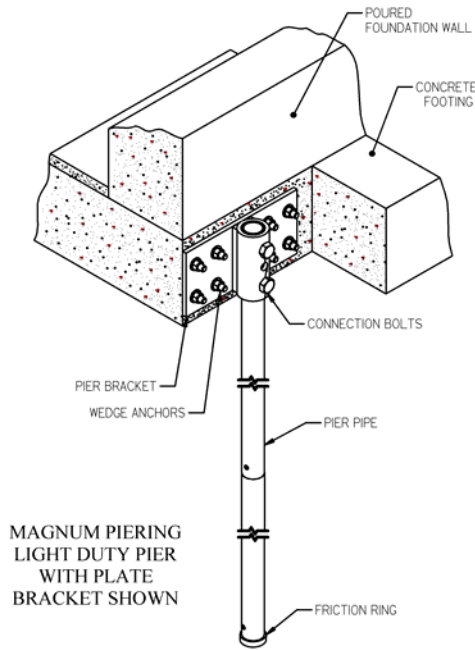
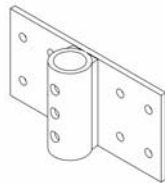
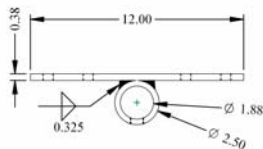


Magnum[®] Light-Duty Steel Push Piering System[™] with MP 2001 Patented Plate Bracket

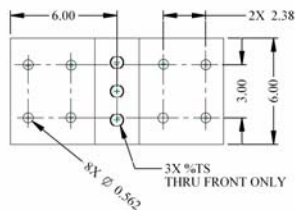


© Copyright 2004 Magnum Piering, Inc. All rights reserved.

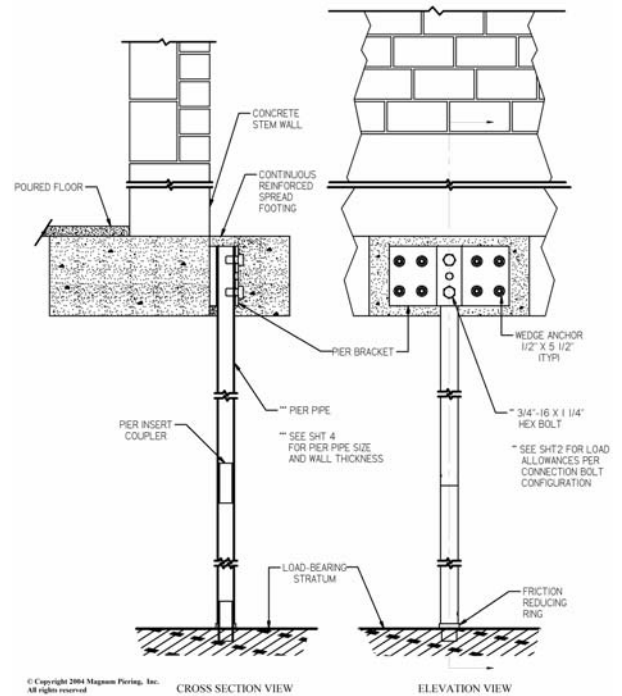
- Pre-engineered system for lifting and/or stabilizing light-duty foundations & structures
- Maximum structure weight 1000 lbs. / linear ft.
- Targeted stabilization applications include –
 - Patios, decks, stoops
 - Crawl space & slab-on-grade structures
 - Retaining walls
- Bracket steel & weld specifications
 - plate steel ASTM A-36, Yield = 36 KSI
 - tube steel ASTM A-519, 70,000 tensile, 60,000 yield
- Magnum 11 gauge, 1.75" O.D. high-strength steel tubing
 - ASTM A-513
- Bracket & pier tubing available as bare metal or optional hot-dip galvanized
- Pier installation using Magnum MP6000 hydraulic ram system



MP2001 Light-Duty Plate Bracket



U.S. Patent #5,234,287



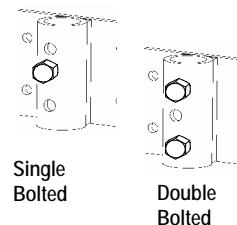
© Copyright 2004 Magnum Piering, Inc. All rights reserved.

CROSS SECTION VIEW

ELEVATION VIEW

Magnum Light-Duty Push Piering System with MP 2001 Plate Bracket

Connection Type	Allowable Capacity (1.5:1 Factor of Safety)
Single Bolted	5 kips
Double Bolted	7 kips



Single Bolted

Double Bolted