

# MAGNUM® MMA-HUR Hurricane Strap

## Allowable Capacity 3 Tons

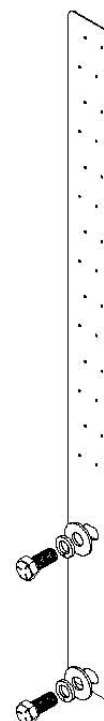
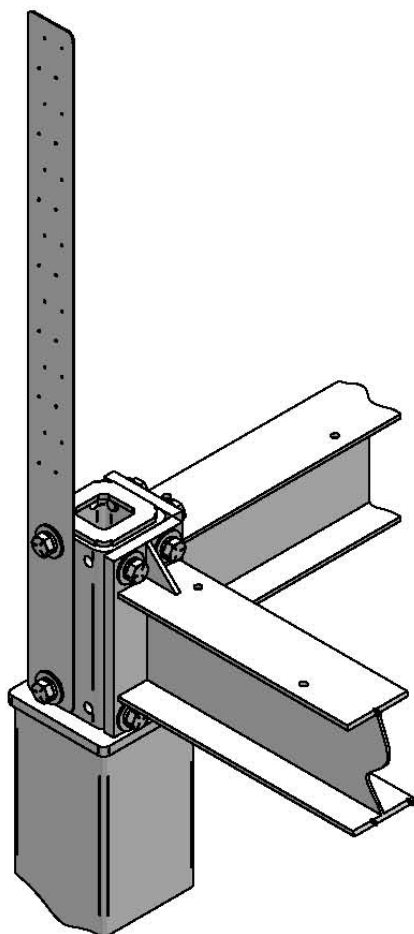
51-11/16" x 4" x 14" Gauge Steel Plate w/ (28) 5/32" Holes for 10d Nails



### Description

The Magnum® MMA-HUR Moment Frame Hurricane Strap has an allowable hold-down capacity of 6 kips. The Hurricane Strap consists of 14 gauge plate steel to attach to exterior corner columns of a Magnum Moment Frame and onto the sheathing of the home and through to the corner framing studsw.

SPECIFICATIONS	
Shape	51-11/16" x 4" x 14 Gauge Plate Steel ASTM A36 36 ksi, or Equivalent
Nailing	(28) 10d Nails
Bolts	(2) 7/8"-9 UNC SAE J429 Grade 5 Zinc Coated to ASTM B695/F1941
Surface Coating	Galvanized per ASTM A153/A123 (G)



### Installation Notes:

Magnum MMA-HUR Moment Frame Hurricane Straps are installed onto the exterior column face with (2) 7/8"-9 UNC bolts. Once bolted, nail the Hurricane Strap onto the new or existing sheathing of the home. Lap siding or other exterior finishes can be installed over the Hurricane Strap.

*All Magnum Products Made in U.S.A.*  
U.S. Patent 9249593; Other Patents Pending.

### Magnum Piering, Inc.

6082 Schumacher Park Dr.  
West Chester, OH 45069  
800-822-7437  
[www.magnumpiering.com](http://www.magnumpiering.com)