

Magnum Piering® BWR413

Basement Wall Reinforcing Beam

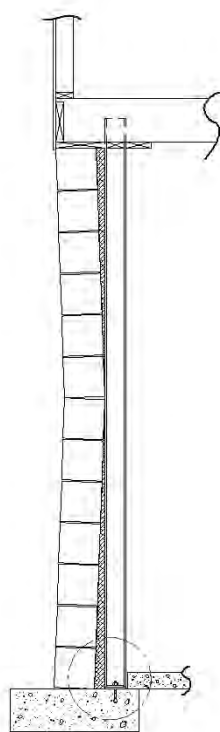
W4x13 – Available 88", 96", 100", and 108" Tall with Base Plate
Adaptable to Block and Cast-in-Place Basement Walls



Description

The Magnum BWR413 Basement Wall Reinforcing Beam consists of a W4x13 steel beam with steel base plate for attachment to basement floor slabs. Top of the reinforcing beam is blocked, braced, or otherwise fixed to the wood flooring system supported on the basement wall. Spacing and detailing of the reinforcing beams varies by project and is the responsibility of registered design professional including lateral earth pressures, support beam spacing, and connection to floor slab and floor framing system.

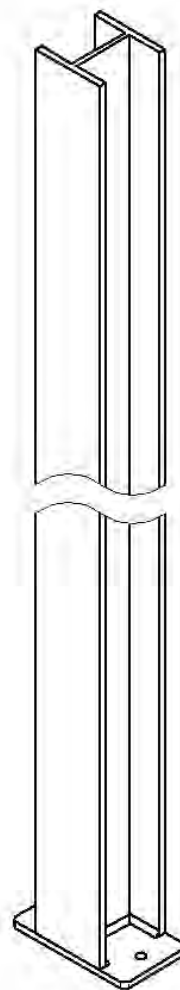
SPECIFICATIONS	
Beam	W4x13 ASTM A572 Gr. 50+
Lengths	88", 96", 100", and 108" Standard (Custom Lengths Available)
Base Plate	4" x 6" Rectangular Plate with (2) Holes
Plate Connection	(2) ½" Expansion Anchors
Surface Coating	Standard Magnum Paint (P)



Installation Note:

Layout required reinforcing beam locations. Attach beams to footing or floor slab using (2) ½" expansion anchors. If attaching to footing, grout opening through slab after attachment of base plate.

Attach top of beam to wood floor system above by cross bracing as required for shear force. Block wood floor system as required to transfer lateral loads. Grout between beam and wall if necessary for firm contact.



Magnum Piering, Inc.

6082 Schumacher Park Dr.
West Chester, OH 45069
800-822-7437
www.magnumpiering.com

All Magnum Products Made in U.S.A.

U.S. Patents 6,058,662 and 5,234,287; Other Patents Pending.

Copyright (C) 2009-2016 All Rights Reserved
MAGNUM CATALOG 2016 Rev. 7-15-16, Page 267