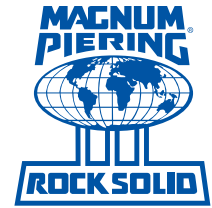


MAGNUM® MMA-818BSP Beam Splice

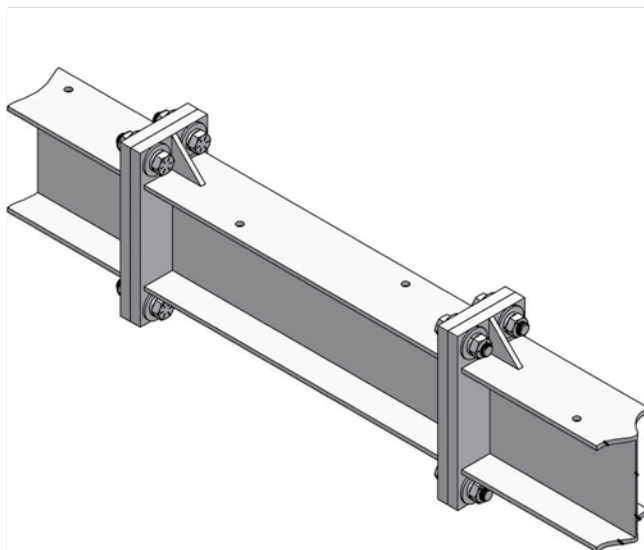
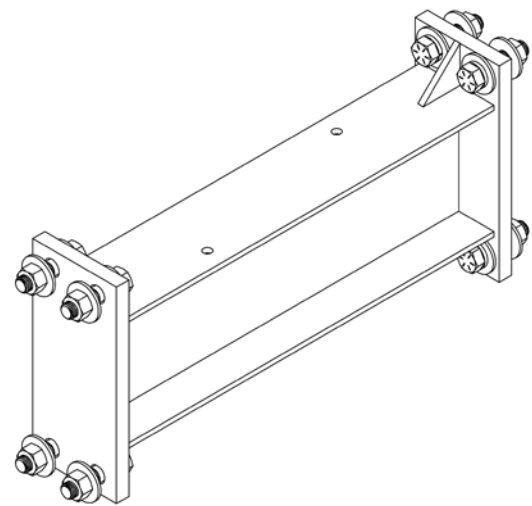
W8x18 Beam and (2) 7/8" End Plates with (4) Holes for 7/8" - 9 UNC Bolts



Description

The Magnum® MMA-818BSP Moment Frame Beam Splice consists of a shorter section of a W8x18 wide flange beam with (2) 7/8" end plate with gussets, one on each end. The gusseted end plates each have (4) 15/16" bolt holes with longer 7/8" bolts for bolting thru (2) Magnum Moment Frame Beam end plates. Allowable lengths vary and are the responsibility of the registered design professional.

SPECIFICATIONS	
Shape	W8x18 Wide Flange Beam ASTM A992 50 ksi, or Equivalent
I	New = 61.9 in ⁴
A _g	New = 5.26 in ²
S	New = 15.2 in ³
Length	Custom
Bolts	(8) 7/8"-9 UNC SAE J429 Grade 5 Zinc Coated to ASTM B695/F1941
Connection	Torque Bolts to 365 ft-lbs
Surface Coating	Galvanized per ASTM A153/A123 (G)



Installation Notes:

Beam splices may be used when main lifting beams will interfere with the installation of the moment frame beam, they allow the frame to be erected and the beam lowered onto the frame.

All Magnum Products Made in U.S.A.
U.S. Patent 9249593; Other Patents Pending.

Magnum Piering, Inc.

6082 Schumacher Park Dr.
West Chester, OH 45069
800-822-7437
www.magnumpiering.com