

# MAGNUM® MMA-BASE12 Concrete Base Plate

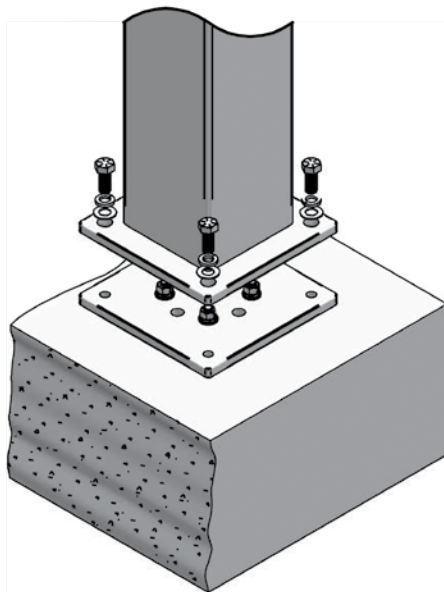
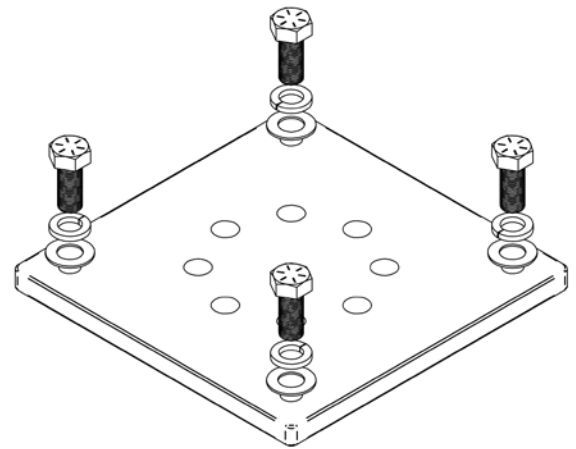
3/4" Column Base Plate for Connection to Concrete



## Description

The Magnum® MMA-BASE12 Moment Frame Concrete Base Plate consists of a Magnum 3/4" Column Base Plate for connection to Moment Frame Columns and holes for 5/8" diameter anchor bolt connection to concrete.

SPECIFICATIONS	
Shape	12" x 12" x 3/4" Plate Steel ASTM A36 36 ksi, or Equivalent
Bolts	(4) 3/4"-16 UNF SAE J429 Grade 5 Zinc Coated to ASTM B695/F1941
Anchor Bolts	(4) 5/8" - 11 x 12" F1554 Gr. 36 All-Thread set w/ Simpson Set-XP Anchor Adhesive or Equivalent
Surface Coating	Galvanized per ASTM A153/A123 (G)



### Installation Notes:

The Magnum Concrete Base Plate should be used with all Magnum Moment Frame Column attachments to concrete.

*All Magnum Products Made in U.S.A.*  
U.S. Patent 9249593; Other Patents Pending.

### Magnum Piering, Inc.

6082 Schumacher Park Dr.  
West Chester, OH 45069  
800-822-7437  
[www.magnumpiering.com](http://www.magnumpiering.com)

Anchor Bolts Sold Separately