

ST. MARY'S SUGAR REFINERY

HELICAL PILES

PROJECT DESCRIPTION:

Project Name:
St. Mary's Sugar Refinery

Date:
February 2012

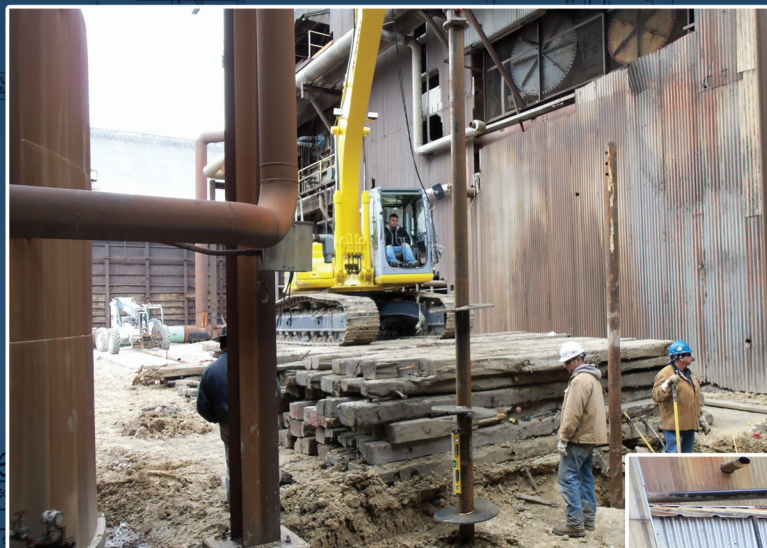
Location:
Jeanerette, Louisiana

Project Type:
Helical Piles

Installer:
Post Tension Specialists

Engineer:
Magnum - Geo Solutions

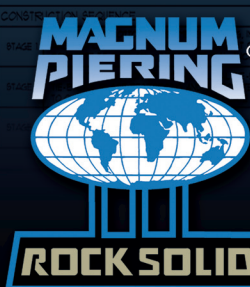
Description:
32 MH536B piles were installed to an ultimate capacity of 142 tons. The piles were battered to resist lateral loading and to prevent grouping effects. Also, the top 6 ft of the installation was pre-drilled and grouted to help resist lateral loads. The piles were compression tested and all achieved capacity.



SYMBOL	QTY	DESIGN CAPACITY	MIN. LENGTH	PIER CAP CONNECTION	NOTES
①	2	30 KIPS	10' (FT)	CAP W/ GEODE WASHERS	HELIX SHAFT (STANDARD DUTY) POST TENSION NUT TO 142.5 KIPS (100%)
②	16	30 KIPS	9' (FT)	MAGNUM TIE-BACK CAP W/ GEODE WASHERS	HELIX SHAFT (STANDARD DUTY) 100% SHALL 3/4" POST TENSION NUT TO 142.5 KIPS (100%)

* SEE DETAILS FOR LENGTH REQUIREMENTS

SYMBOL	QTY	DESIGN CAPACITY	MIN. LENGTH	PIER CAP CONNECTION	NOTES
③	34	22 KIPS	AS REQD TO MEET DESIGN CAPACITY	PLATE BRACKET	100% SHALL 3/4" POST TENSION NUT TO 142.5 KIPS (100%)
④	5	22 KIPS	AS REQD TO MEET DESIGN CAPACITY	PLATE BRACKET	100% SHALL 3/4" POST TENSION NUT TO 142.5 KIPS (100%)



MAGNUM
HELICAL PILES

Toll Free: 800.822.7437 www.magnumpiering.com