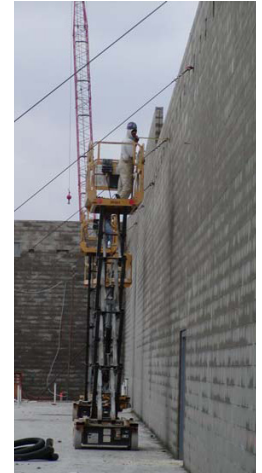


CASE HISTORY

TARGET Store
Cincinnati, OH



110 - Helical Piles Along the North and South Walls

The 100,000 sq.ft department store project had two failed foundations on the north and south walls. As a result, both walls to roll outward. The process of slop stabilization began. A total of 110 MAGNUM Steel Push Piers were installed on 250' of the south wall and 330' of the north wall. The south wall had settled 1.5" and had settled 2.5". The walls were successfully lifted, rolled inward and stabilized in 14 days. This remedial solution kept the project on track and saved hundreds of thousands of dollars in delays and replacement costs.

