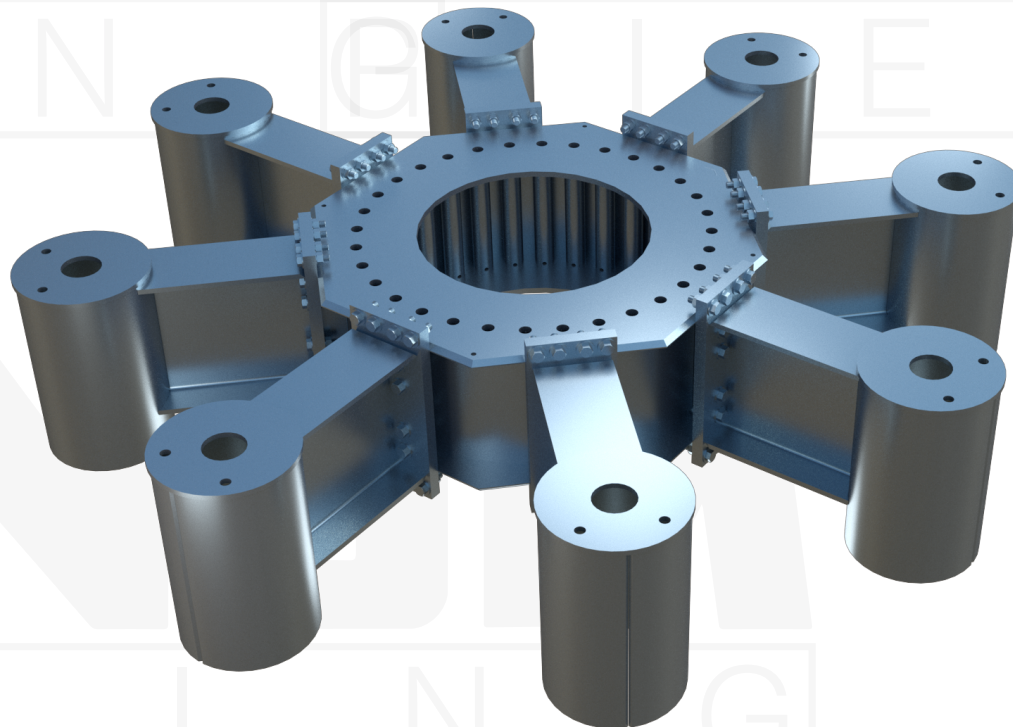


# MAGNUM® MUG308-19 Utility Grillage

## 15,750 Kip-Ft Ground Line Moment

### 8-Pile Steel Grillage Assembly

**Description:** MAGNUM® MUG308-19 Utility Grillage (MUG) has a factored groundline moment capacity of 15,750 kip-ft. MUGs are made to order in the USA following our ISO 9001 certified quality program. Grillage central mounting plates are configured to coordinate with project specific pole base plates while the grillage beams span to a symmetric pile group. Patented clamp-style caps allow MAGNUM® helical piles to directly support the MUG providing an all-steel foundation solution for remote or demanding site locations.

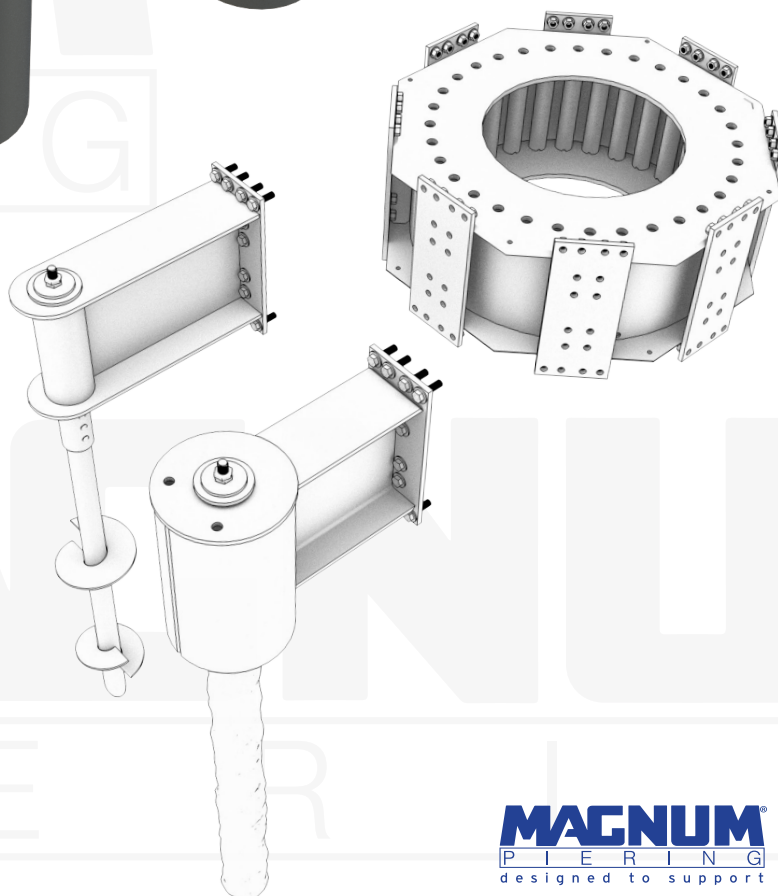


Approximate Service Level Tower Reactions	
Moment (kip-ft)	15,750
Vertical (kip)	220
Properties	
Number of Piles	8
Pile Circle	18.5 ft

**Example Helical Piles for Varying GLM:**

Helical Pile Type	Ground Line Moment (k-ft)	Pile Axial (kip)	Pile Shear (kip)
MH1338	15,750	430	12.9
MH939	10,500	284	8.5
MH736	5,250	142	4.3

**Installation Notes:** After Installation of MAGNUM® helical piles, cut off excess pile shafts to the desired elevation then install MAGNUM® MHC1304 pile end caps on each pile. Install the MUG on top of the end caps and connect to the piles using provided threadbar and washer plates. MUG connection detail allows up to 3" pile location tolerance to accommodate typical pile installations. After MUG is fastened in place, directly mount the structure onto the central mounting plate and secure in place.



**MAGNUM®**  
PIERING  
designed to support

156 Circle Freeway Dr.  
Cincinnati, OH 45246  
800-822-7437  
[www.MagnumPiering.com](http://www.MagnumPiering.com)