

MAGNUM® MP1001-4 Plate Bracket

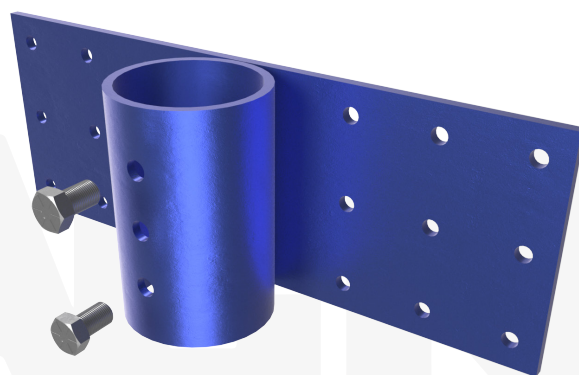
Allowable Capacity 25 Tons




8" x 22-3/8" x 3/8" Plate with (18) 9/16" Thru Holes and 4.63" I.D. Collar

Fits MH429(-6), MH434(-6) Helical Piles and MP413, MP419, MP425, MP431 Push Piers

Description: The MAGNUM® Plate Bracket consists of a collar tube with (3) 3/4" threaded bolt holes for connection to MAGNUM® Push Piers or Helical Piles and a steel plate with thru holes for attachment to existing concrete using expansion anchors. MAGNUM® products are manufactured in the USA according to our ISO 9001 approved quality program. MAGNUM® brackets are designed in accordance with ICC-AC308, IBC, ACI, and AISC codes. Design and detailing of the connection to the structure varies by project and is the responsibility of the registered design professional including maximum concrete span, pier spacing, concrete shear, and concrete bearing.

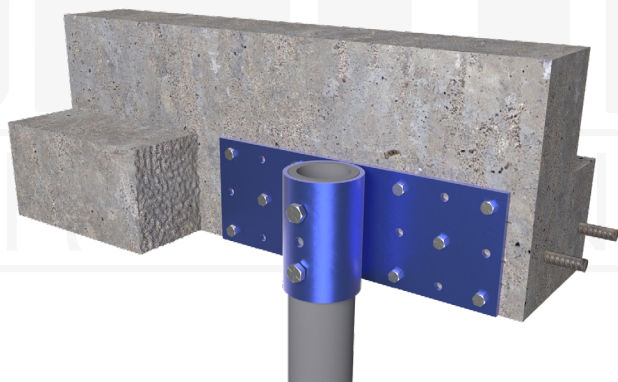
Specifications	
Collar Tube	0.37 in. x 4.63 in. I.D. ASTM A513, Fy = 65 ksi or Better
Configuration	8" x 22-3/8" x 3/8" Plate with 18 – 9/16" Thru Holes for 1/2" Expansion Anchors
Pile Connection	(1, 2, or 3) 3/4" SAE J429 Grade 8 Zinc Coated to ASTM B695/F1941
Surface Coating	Galvanized per ASTM A153/A123 (G), Bare Steel (NG) or Standard MAGNUM® Blue Paint (P)
Compatibility	MH429(-6), MH434(-6), MP413, MP419, MP425, & MP431



Connection Type	Ultimate Capacity* 0.13 / 0.25 Wall Pile	Allowable Capacity* 0.13 / 0.25 Wall Pile
 Single Bolted	10 Tons / 18 Tons	5 Tons / 9 Tons
 Double Bolted	17 Tons / 35 Tons	8 Tons / 18 Tons
 Triple Bolted	28 Tons / 50 Tons	14 Tons / 25 Tons

Installation Notes: Prepare the existing foundation. For steel push pier applications, attach the bracket and MAGNUM® ram. Install the push pier to the required pressure and load test. For helical pile applications, pot-hole excavate the pier location so the helix bearing plates fit below the existing foundation and the shaft is as close as possible to the face of the foundation. Install the helical pile to the correct depth and torque. Mount the bracket by sliding down the shaft rotating into position then secure to concrete. In both cases, lift the structure as needed using either a MAGNUM® ram or lifting fixture. Drill holes and bolt the bracket to the pile. (Expansion Anchors Sold Separately)

*Bracket connection to pile consists of field threaded blind bolts as described in Section 7-13 of AISC Code. Capacities shown are based on IAS accredited laboratory testing of MAGNUM® products.



U.S. Patents 5,234,287, 4,708,528, 5,123,209

MAGNUM®
PIERING
designed to support

156 Circle Freeway Dr.
Cincinnati, OH. 45246
800-822-7437

www.MagnumPiering.com