

# MAGNUM® MP1006-3 Reverse Angle

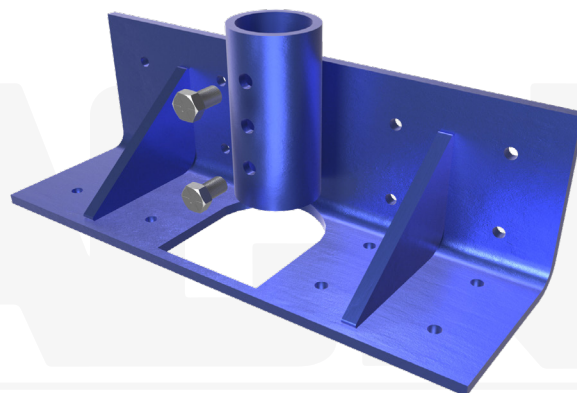
## Allowable Capacity 25 Tons

8" x 8" x 24" x 1/2" Angle with (16) 11/16" Thru Holes and 3.13" I.D. Collar

Fits MP313 and MP325 Steel Push Piers

**Description:** The MAGNUM® Reverse Angle Bracket consists of a collar tube with (3) 3/4" threaded bolt holes for connection to MAGNUM® Push Piers or Helical Piles and a steel angle with thru holes for attachment to existing concrete using expansion anchors. MAGNUM® products are manufactured in the USA according to our ISO 9001 approved quality program. MAGNUM® brackets are designed in accordance with ICC-AC308, IBC, ACI, and AISC codes. Design and detailing of the connection to the structure varies by project and is the responsibility of the registered design professional including maximum concrete span, pier spacing, concrete shear, and concrete bearing.

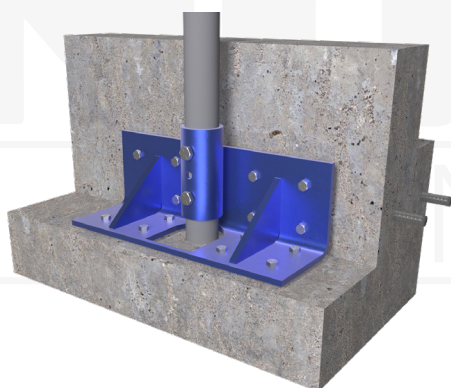
Specifications	
Collar Tube	0.37 in. x 3.13 in. I.D. ASTM A513, Fy = 65 ksi or Better
Configuration	8" x 8" x 24" x 1/2" Angle with (16) 11/16" Thru Holes for 5/8" Expansion Anchors
Pile Connection	(1, 2, or 3) 3/4" SAE J429 Grade 8 Zinc Coated to ASTM B695/F1941
Surface Coating	Galvanized per ASTM A153/A123 (G), Bare Steel (NG) or Standard MAGNUM® Blue Paint (P)
Compatibility	MP313 & MP325



Connection Type	Ultimate Capacity* 0.13 / 0.25 Wall Pile	Allowable Capacity* 0.13 / 0.25 Wall Pile
 <b>Single Bolted</b>	10 Tons / 18 Tons	5 Tons / 9 Tons
 <b>Double Bolted</b>	17 Tons / 35 Tons	8 Tons / 18 Tons
 <b>Triple Bolted</b>	28 Tons / 50 Tons	14 Tons / 25 Tons

**Installation Notes:** Prepare the existing foundation. Core a 3.50" diameter or larger hole through the footing or slab where the push pier is located. Attach the bracket and MAGNUM® ram. Install the push pier through the core hole to the required pressure and load test. Lift the structure as needed using either a MAGNUM® ram or lifting fixture. Drill holes and bolt the bracket to the pile. (Expansion Anchors Sold Separately)

\*Bracket connection to pile consists of field threaded blind bolts as described in Section 7-13 of AISC Code. Capacities shown are based on IAS accredited laboratory testing of MAGNUM® products.



U.S. Patents 5,234,287, 4,708,528, 5,123,209

**MAGNUM®**  
PIERING  
designed to support

156 Circle Freeway Dr.  
Cincinnati, OH. 45246  
800-822-7437  
[www.MagnumPiering.com](http://www.MagnumPiering.com)