

MAGNUM® MP1008-3-7 Lifting Assembly

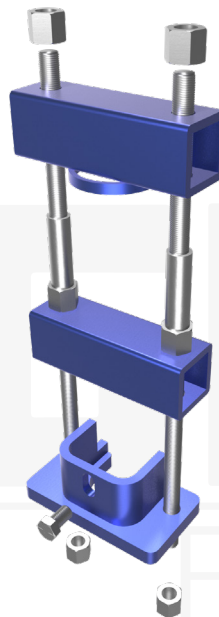
Allowable Capacity 25 Tons Compression / 18 Tons Tension

(2) #7 Gr. 75 Thread Bars with Top Fixture and Base Fixture

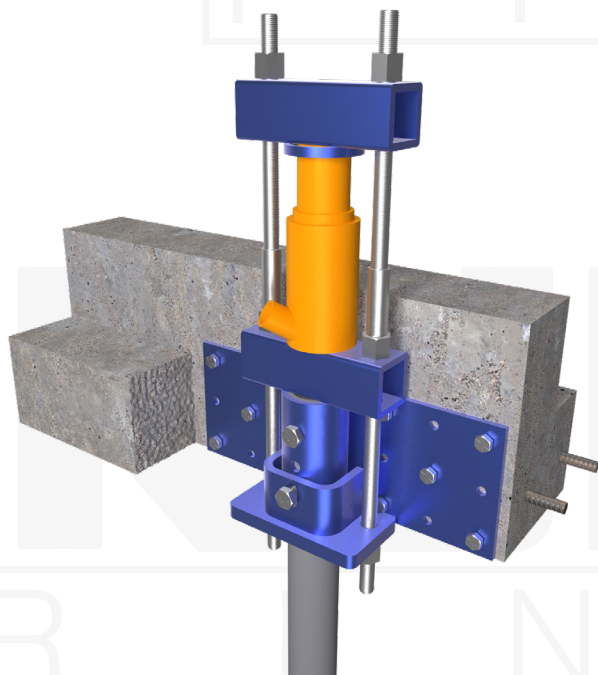
Fits MP1001-3, MP1002-3, MP1005-3, MP1006-3, MP1007-3, MP1017-3 Brackets

Description: The MAGNUM® Lifting Assembly consists of a lifting shoe and two square steel beams with holes for a pair of threaded rod attachments. MAGNUM® products are manufactured in the USA according to our ISO 9001 approved quality program. MAGNUM® brackets are designed in accordance with ICC-AC308, IBC, ACI, and AISC codes. Design and detailing of the connection to the structure varies by project and is the responsibility of the registered design professional including maximum concrete span, pier spacing, concrete shear, and concrete bearing.

Specifications	
Top Fixture	3.5" x 3.5" Tube Steel
Configuration	(2) #7 Gr. 75 Thread Bars with Top Fixture and Base Fixture
Pile Connection	Compression: Direct Bearing w/ (1) 3/4" SAE J429 Grade 8 Zinc Coated to ASTM B695/F1941 into bracket collar Tension: (2) additional 3/4" through bracket collar
Surface Coating	Galvanized per ASTM A153/A123 (G), Bare Steel (NG) or Standard MAGNUM® Blue Paint (P)
Compatibility	MP1001-3, MP1002-3, MP1005-3, MP1006-3, MP1007-3 & MP1016-3



Installation Notes: After installation of pier and bracket, attach lifting assembly (MP1008A-3) to the bracket underside using the bolt provided. Snug tighten nuts on top fixture. Attach second top fixture (MP1008B-3). Place a hydraulic power pack or bottle jack between the top fixtures and lift as required. Re-tighten nuts to secure pile and bracket position. Remove upper fixture (MP1008B-3) and re-use on other piles.



MAGNUM®
PIERING
designed to support

156 Circle Freeway Dr.
Cincinnati, OH. 45246
800-822-7437
www.MagnumPiering.com