

# MAGNUM® MP1017-3 Tie-Back Bracket

## Allowable Capacity 16 Tons Tension

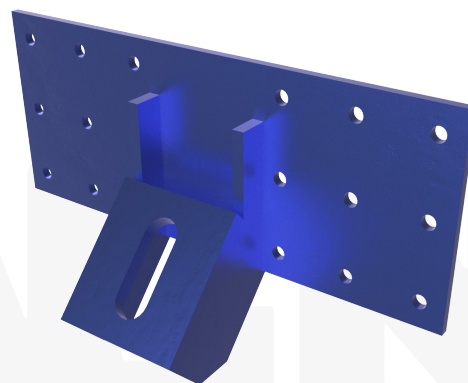
8" x 21" x 3/8" Plate with (18) 9/16" Thru Holes & Gusseted Bearing Plate

Fits MH313B, MH313BR, MH325B, MH325BR(-6), MH3521, MH3530 Helical Anchors

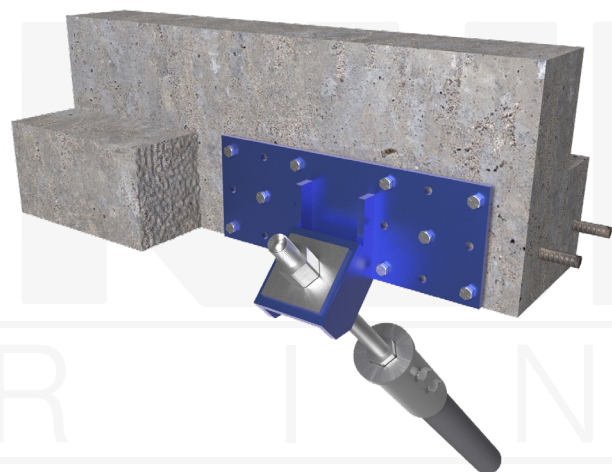
**Description:** The MAGNUM® Tie-Back bracket consists of a plate and two gussets for connection to MAGNUM® helical piles and thru holes for attachment to existing concrete using expansion anchors. MAGNUM® products are manufactured in the USA according to our ISO 9001 approved quality program. The bracket is designed in accordance with ICC-AC308, IBC, ACI, and AISC codes. Design and detailing of the connection to the structure varies by project and is the responsibility of the registered design professional including maximum concrete span, anchor spacing, concrete shear, and concrete bearing.

Specifications	
Bearing Plate	ASTM A36 w/ 1-1/2" Slotted Hole
Configuration	8" x 21" x 3/8" Plate with (18) 9/16" Thru Holes for 1/2" Expansion Anchors
Pile Connection	MHC1080-3B, MHC1080-3BR or MHC1080-35B Anchor Caps (not shown)
Surface Coating	Galvanized per ASTM A153/A123 (G), Bare Steel (NG) or Standard MAGNUM® Blue Paint (P)
Compatibility	MH313B, MH313BR, MH325B, MH325BR(-6), MH3521 & MH3530

Bracket Capacity In Tension	
Ultimate	32 Tons
Allowable	16 Tons



**Installation Notes:** Prepare the existing foundation. Install the helical anchor to the correct depth and torque. Install a MAGNUM® MHC1080 pile cap on the anchor. Mount the bracket by sliding down over the thread bar into position. Secure to the anchor and post-tension as required for the project. Use spherical or wedge washer if anchor is not sufficiently perpendicular to bearing plate. (Expansion Anchors Sold Separately)



**MAGNUM®**  
PIERING  
designed to support

156 Circle Freeway Dr.  
Cincinnati, OH. 45246  
800-822-7437  
[www.MagnumPiering.com](http://www.MagnumPiering.com)