

MAGNUM® MP1018 Micropile Bracket

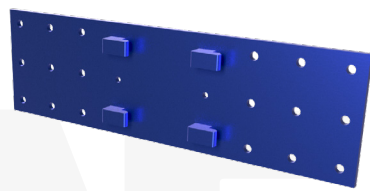
Allowable Capacity 26 Tons

8" x 27" x 3/8" Plate with (18) 9/16" Anchor Holes

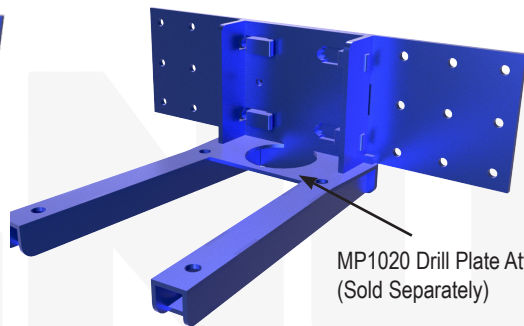
Fits 3", 3.5", 4" & 4.5" O.D. Steel Micropile Casings

Specifications	
Collar Tube	0.37 in. x 3", 3.5", 4" or 4.5" I.D. ASTM a513, Fy = 65 ksi or better
Configuration	8"x27"x3/8" Plate w/ (18) 9/16" Anchor Holes
Pile Connection	(1, 2 or 3) 3/4" SAE J429 Grade 8 Zinc Coated to ASTM B695/F1941
Surface Coating	Galvanized per ASTM A153/A123 (G) or Standard MAGNUM® Blue Paint (P) or Epoxy Coated per ICC-ES AC228 (EP)
Compatibility	3", 3.5", 4" or 4.5" O.D. Steel Micropile Casings

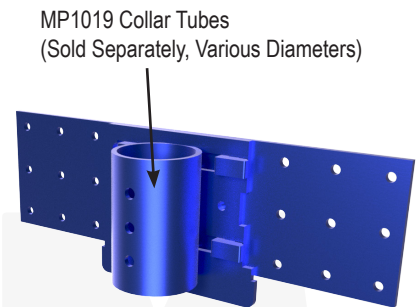
Description: MAGNUM® Micropile Bracket consists of a steel plate with tabbed connection to a collar tube and (3) 3/4" threaded bolt holes for connection to micropile casing. The steel plate can be attached to existing concrete using expansion anchors. A steel motor mount support can be attached to the bracket easily align micropile placement. MAGNUM® products are manufactured in the USA according to our ISO 9001 approved quality program. MAGNUM® brackets are designed in accordance with ICC-AC308, IBC, ACI, and AISC codes. Design and detailing of the connection to the structure varies by project and is the responsibility of the registered design professional including maximum concrete span, pier spacing, concrete shear, and concrete bearing.



MP1018 Micropile Plate Bracket



MP1020 Drill Plate Attachment (Sold Separately)



MP1019 Collar Tubes (Sold Separately, Various Diameters)

Connection Type	Ultimate Capacity* 0.13 / 0.25 Wall Casing	Allowable Capacity* 0.13 / 0.25 Wall Casing
<p>Single Bolted</p>	10 Tons / 18 Tons	5 Tons / 9 Tons
<p>Double Bolted</p>	17 Tons / 35 Tons	8 Tons / 18 Tons
<p>Triple Bolted</p>	28 Tons / 50 Tons	14 Tons / 25 Tons

Installation Notes: Attach bracket plate to the side of existing foundation using up to (18) 1/2" concrete anchors. Attach drill support arms and mount drill. Drill micropile to the specified depth. Install desired reinforcing steel bar, grout and a 6ft minimum length section of casing at the top of the pile. Remove the drill and drill arms for use on the next micropile. Slip appropriate collar tube over the micropile casing and interlock tabbed connection, secure collar to plate with provided bolts. Once the micropile grout has cured a MAGNUM® ram or MAGNUM® lifting kit, with the appropriate sized shoe, can be used to lift and re-level the structure if necessary. Lock-off the pile to the bracket with one, two or three 3/4" Grade 8 bolts, or weld. (Expansion Anchors Sold Separately)

*Bracket connection to pile consists of field threaded blind bolts as described in Section 7-13 of AISC Code. Capacities shown are based on IAS accredited laboratory testing of MAGNUM® products.

MAGNUM
PIERING
designed to support

156 Circle Freeway Dr.
Cincinnati, OH 45246
800-822-7437
www.MagnumPiering.com