

MAGNUM® MP1029 Grout-Guide Micropile Bracket

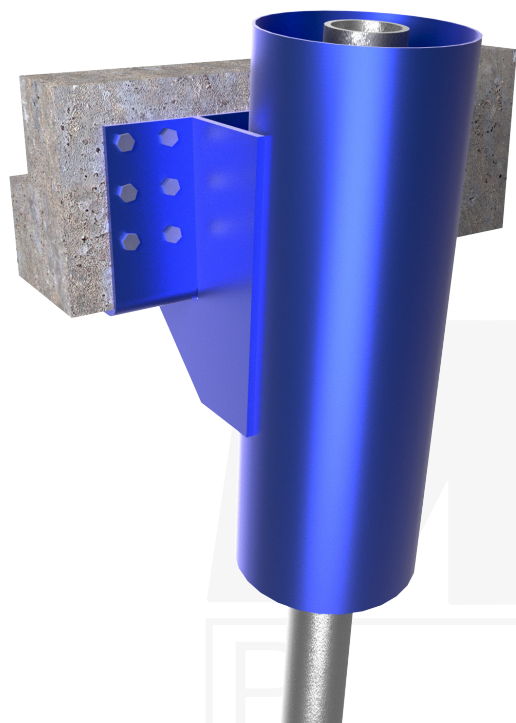
Allowable Capacity 39 Tons

8" x 12" x 24" x 3/8" Angle with (12) 11/16" Anchor Holes

Fits 5.5", 6.0", 6.63", 7.0", 7.63" & 8.635" O.D. Steel Micropile Casings

Specifications	
Grout Guide	12.75" Dia. X 0.13" Wall (or better) x 36" Long
Configuration	8"x12"x24"x1/2" Angle w/ (12) 11/16" Anchor Holes
Pile Connection	Fill Annular Space with High-Strength, Non-Shrink Grout
Surface Coating	Galvanized per ASTM A153/A123 (G) or Standard MAGNUM® Blue Paint (P) or Epoxy Coated per ICC-ES AC228 (EP)
Compatibility	5.5", 6.0", 6.63", 7.0", 7.63" & 8.635" O.D. Steel Micropile Casings

Description: MAGNUM® Grout-Guide Micropile Bracket consists of a steel angle and a large diameter collar tube for grouted connection to micropile casing. The steel angle can be attached to existing concrete using expansion anchors. MAGNUM® products are manufactured in the USA according to our ISO 9001 approved quality program. MAGNUM® brackets are designed in accordance with ICC-AC358, IBC, ACI, and AISC codes. Design and detailing of the connection to the structure varies by project and is the responsibility of the registered design professional including maximum concrete span, pier spacing, concrete shear, and concrete bearing.



Micropile Casing			Allowable Capacity (Compression), Tons*
Diameter, in	Min. Thickness, in	Yield Strength, ksi	
5.5	0.415	80	27
5.5	0.562	80	35
6.625	0.432	80	39
7.0	0.408	80	39
7.625	0.43	80	39
8.625	0.5	80	39

*Based on combined bending/buckling in firm soil at a specified eccentricity of 7" from face of wall to centerline of micropile casing.

Installation Notes: Excavate soil in area of bracket. Notch footing (if any) flush with foundation wall. Apply a grout bed of high strength, fast setting, non-shrink grout a minimum of 1/2" thick to the bottom angle face, then attach the bracket to the foundation with a minimum of (6) 5/8" concrete anchors. After grout sets, drill micropile through the center of the guide sleeve. Install desired reinforcing steel bar, grout and a 6 ft minimum length section of casing at the top of the micropile. Fill annular space between guide sleeve and micropile casing with high-strength, non-shrink grout. (Expansion Anchors Sold Separately)

MAGNUM®
PIERING
designed to support

156 Circle Freeway Dr.
Cincinnati, OH 45246
800-822-7437
www.MagnumPiering.com