

# MAGNUM® MP1030-150 Lifting Bracket

## Allowable Capacity 10 Tons Compression

8" x 8" x 14" x 3/8" Plate with (4) 11/16" Thru Holes and 3" O.D. T-Beam

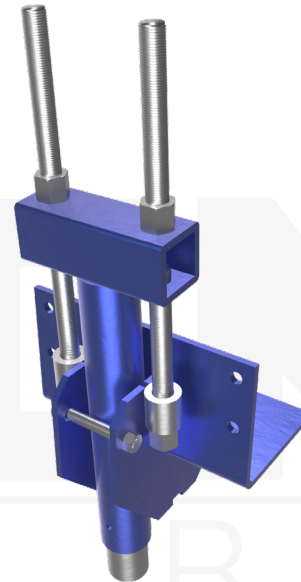
Fits MS150B Helical Piles

**Description:** The MAGNUM® Lifting Bracket consists of steel angle with a pair of gusset plates for connection to MAGNUM® Push Piers or Helical Piles via a pair of threaded rods and steel T-Beam. MAGNUM® products are manufactured in the USA according to our ISO 9001 approved quality program. MAGNUM® brackets are designed in accordance with ICC-AC308, IBC, ACI, and AISC codes. Design and detailing of the connection to the structure varies by project and is the responsibility of the registered design professional including maximum concrete span, pier spacing, concrete shear, and concrete bearing.

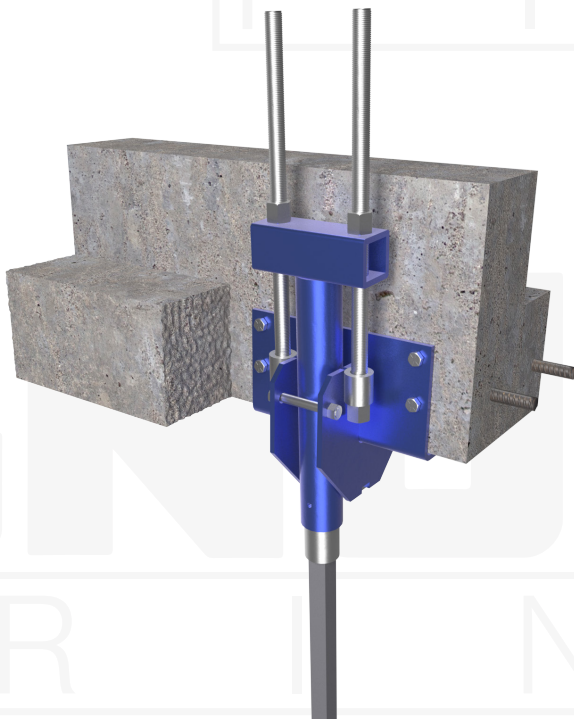
### Specifications

Collar Tube	0.25" x 3" O.D. x 20.25" ASTM A513, Fy = 65 ksi or Better
Configuration	8" x 8" x 14" x 3/8" Plate with (4) 11/16" Thru Holes for 5/8" Expansion Anchors
Pile Connection	3" x 3" x 3/8" Cross Beam, Plus 5/8" Cross Bolt
Surface Coating	Galvanized per ASTM A153/A123 (G), Bare Steel (NG) or Standard MAGNUM® Blue Paint (P)
Compatibility	MS150B

Lifting Assembly



**Installation Notes:** Prepare the existing foundation by chipping the footing (if applicable) flush with the foundation wall. Apply a grout bed of high-strength, fast-setting, non-shrink grout a minimum of 1/2" thick to the bottom angle face. Place the bracket on the foundation and attach with four expansion anchors. Excavate under the bracket at the pile location so the helix bearing plates fit below the existing foundation and the shaft is as close as possible to the face of the bracket. Install the helical pile at 3° from vertical to the correct depth and torque. Cut-off the helical pile shaft at 1" to 6" above the bracket gusset plates (as required for lifting). Connect the helical pile to the bracket by sliding the T-Beam down the shaft; force the T-Beam toward the bracket face and lock into position with the hex bolt and nut provided. To lock-off the pile, simply tighten the (2) hex nuts located above the T-Beam. Otherwise, use MAGNUM® MP1031 Lifting Accessory to pre-load the pile to specific pressure and/or to lift the foundation. (Expansion Anchors Sold Separately)



**MAGNUM®**  
PIERING  
designed to support

156 Circle Freeway Dr.  
Cincinnati, OH. 45246  
800-822-7437  
[www.MagnumPiering.com](http://www.MagnumPiering.com)