

# MAGNUM® MHC1000-3B Grade Beam Cap

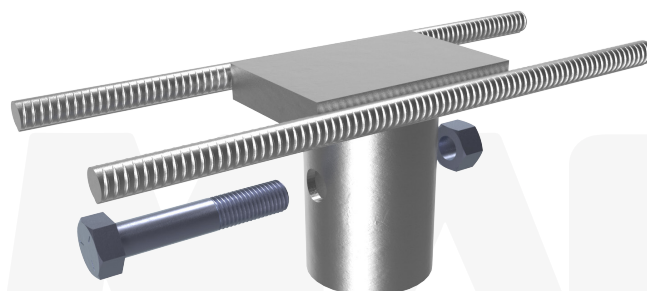
## Allowable Capacity 25 Tons Compression / 16 Tons Tension

(2) #7 Reinforcing Steel Bars Horizontal & 3.13-Inch I.D. Collar

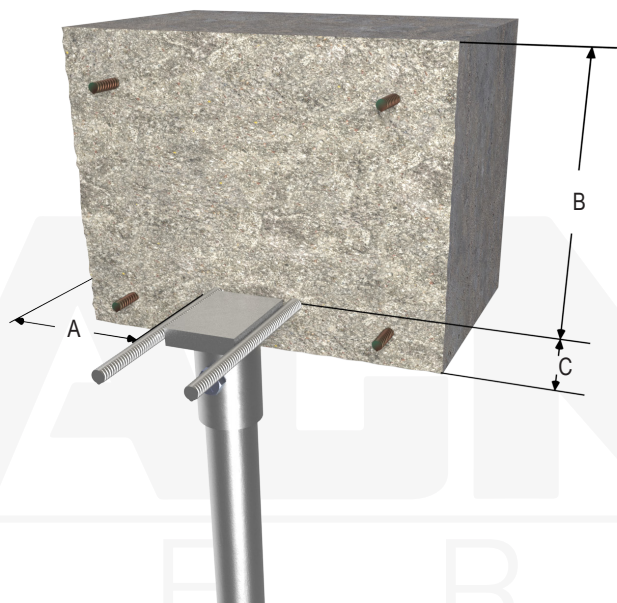
Fits MH313B, MH313BR & MH325B Helical Piles

**Description:** MAGNUM® Grade Beam Caps consist of a collar tube with bolt hole for connection to MAGNUM® helical piles and horizontal reinforcing steel bars for embedment in cast-in-place reinforced concrete. MAGNUM® products are manufactured in the USA according to our ISO 9001 approved quality program. Structural capacities are developed according to AISC 360 and ACI 318 considering an average design life of 75 years for bare steel in most soil conditions. Hot-dip galvanizing is available upon request. Design and detailing of the structure to which bearing plate cap is embedded in varies by project and is the responsibility of the registered design professional.

Specifications	
Collar Tube	0.25" x 3.13" I.D. ASTM A513, Fy = 65 ksi or Better
End Effector	(2) #7 ASTM A706 GR. 60 Bars Horizontal
Pile Connection	(1) 7/8" SAE J429 Grade 5 Zinc Coated to ASTM B695/F1941
Coating	Galvanized per ASTM A153/A123 (G), Bare Steel (NG), or Epoxy Coated per ICC-ES AC228 (EP)
Compatibility	MH313B, MH313BR, MH325B
Capacity	
Ultimate Compression/ Tension	50 Tons / 32 Tons
Allowable Compression/ Tension	25 Tons / 16 Tons



**Notes:** Cap capacity is developed using the ASD design method and considers strength of collar, end effector, and pile connection. Capacity may be limited by the helical pile, bearing/pullout capacity of soil, or strength of the concrete the cap is embedded in.



**Installation Notes:** After installation of a MAGNUM® Helical Pile to the correct depth, torque, and capacity, cut-off the pile shaft at the proper elevation. Drill (1) 15/16" diameter hole through the shaft using a MAGNUM® drill template, place the cap over the shaft and secure with (1) 7/8" bolt. Snug tighten nut. Alternatively, drilling through pile may be omitted and plug welds may be used to secure cap to pile in place of bolt, see MAGNUM® Technical Bulletin TB004. Ensure direct bearing of plate on shaft. Place reinforcing steel, cast concrete and consolidate around the pile cap per project requirements.

A - As Required for Shear (Min. 4" per IBC)  
B - As required for Compression. See pages 184-185.  
C - As Required for Tension (Min. 3" per IBC). See pages 184-185.

**MAGNUM®**  
PIERING  
designed to support

156 Circle Freeway Dr.  
Cincinnati, OH. 45246  
800-822-7437  
www.MagnumPiering.com