

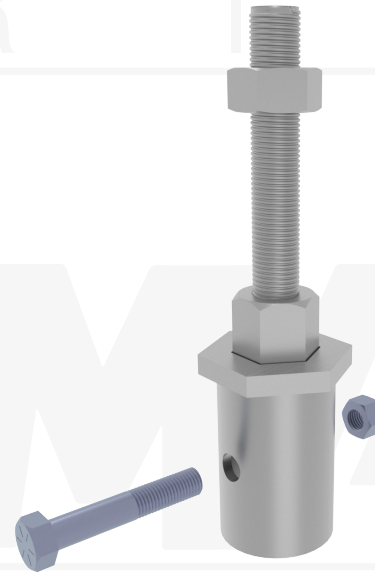
MAGNUM® MHC1080-3008HB112 Tie-Back Cap

Allowable Capacity - 12.5 Tons Tension

(1) 12" #8, Gr. 75 Thread Bar with (1) #8 Nut & 3.13-Inch I.D. Collar
Fits MH313B, MH313BR & MH325B Helical Piles

Description: MAGNUM® Tie-Back Caps consist of a collar tube with bolt hole for connection to MAGNUM® helical piers and a thread bar & nut for attachment to various earth retention structures and foundations. The tie-back caps are manufactured in the USA according to our ISO 9001 approved quality program. Structural capacities are developed according to AISC 360 considering an average design life of 75 years for bare steel in most soil conditions. Hot-dip galvanizing is available upon request. Design and detailing of the structure to which the helical tie-back cap is attached varies by project and is the responsibility of registered design professional including but not limited to waler size, bearing plate or wall facing (if any), and concrete cover as applicable.

Specifications	
Collar Tube	0.25" x 3.13" I.D. ASTM A513, Fy = 65 ksi or Better
End Effector	(1) #8 x 12" Gr. 75 Thread Bar & (1) #8 Nut - Plates & Washers Sold Separately
Pile Connection	(1) 7/8" SAE J429 Grade 5 Zinc Coated to ASTM B695/F1941
Coating	Galvanized per ASTM A153/A123 (G), Bare Steel (NG), or Epoxy Coated per ICC-ES AC228 (EP)
Compatibility	MH313B, MH313BR, MH325B
Capacity	
Ultimate Compression/Tension	NA / 25 Tons
Allowable Compression/Tension	NA / 12.5 Tons
Installation Torque Rating	13,200 ft*lb



Notes: Cap capacity is developed using the ASD design method and considers strength of collar, end effector, and pile connection. Capacity may be limited by the helical pile itself, bearing/pullout capacity of soil, or strength of the structure to which the cap is attached.

Installation Notes: After installation of a MAGNUM® Helical pile and any extensions, place the cap on the last segment and secure with (1) 7/8" bolt, snug tighten nut. Omit the thread bar, and continue installation until the correct depth and torque is achieved. Install the thread bar and bearing plate, walers or brackets as applicable. Snug tighten or post-tension thread bar nut against bearing plate as required for the project.



Bearing Plate & Washers Sold Separately

MAGNUM®
PIERING
designed to support

156 Circle Freeway Dr.
Cincinnati, OH. 45246
800-822-7437
www.MagnumPiering.com