

MAGNUM® MHC1080-41424B Tie-Back Cap

Allowable Capacity - 48 Tons Tension

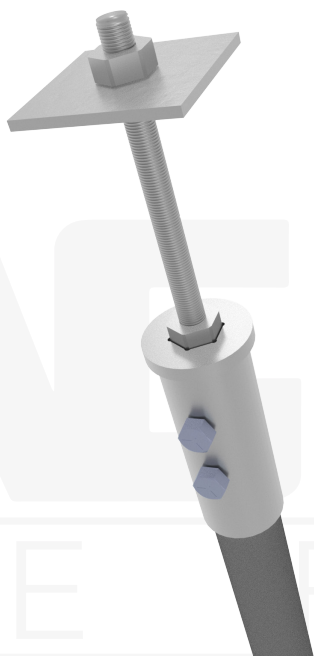
(1) 24" #14, Gr. 75 Thread Bar with (1) #14 Nut & 4.63-Inch I.D. Collar

Fits MH429 & MH434 Helical Piles

Description: MAGNUM® Tie-Back Caps consist of a collar tube with bolt holes for connection to MAGNUM® helical piers and a thread bar & nut for attachment to various earth retention structures and foundations. The tie-back caps are manufactured in the USA according to our ISO 9001 approved quality program. Structural capacities are developed according to AISC 360 considering an average design life of 75 years for bare steel in most soil conditions. Hot-dip galvanizing is available upon request. Design and detailing of the structure to which the helical tie-back cap is attached varies by project and is the responsibility of registered design professional including but not limited to waler size, bearing plate or wall facing (if any), and concrete cover as applicable.

Specifications	
Collar Tube	0.31" x 4.63" I.D. ASTM A252, Fy = 65 ksi or Better
End Effector	(1) #14 x 24" Gr. 75 Thread Bar & (1) #14 Nut - Plate & Washer Sold Separately
Pile Connection	(2) 1-1/4" SAE J429 Grade 5 Zinc Coated to ASTM B695/F1941
Coating	Galvanized per ASTM A153/A123 (G), Bare Steel (NG), or Epoxy Coated per ICC-ES AC228 (EP)
Compatibility	MH429(-6), MH434(-6)
Capacity	
Ultimate Compression/ Tension	NA / 97 Tons
Allowable Compression/ Tension	NA / 48 Tons

Notes: Cap capacity is developed using the ASD design method and considers strength of collar, end effector, and pile connection. Capacity may be limited by the helical pile itself, bearing/pullout capacity of soil, or strength of the structure to which the cap is attached.



Installation Notes: After installation of a MAGNUM® Helical Anchor or Pile to the correct depth, torque, and capacity, begin by cutting-off the pile shaft at the proper elevation. Drill (2) 1-5/16" holes using the MAGNUM® drill template. Place the pile cap over the shaft and secure with (2) 1-1/4" bolts. Snug tighten nuts. Alternatively, drilling through pile may be omitted and plug welds may be used to secure cap to pile in place of bolts, see MAGNUM® Technical Bulletin TB004. Snug tighten or post-tension thread bar nut against bearing plate as required for the project.

Bearing Plate & Washers Sold Separately

MAGNUM®
PIERING
designed to support

156 Circle Freeway Dr.
Cincinnati, OH. 45246
800-822-7437
www.MagnumPiering.com