

# MAGNUM® MHC1093-3BR1 Pipe Support Cap

## Allowable Capacity 6 Tons Compression / 2.5 Tons Tension

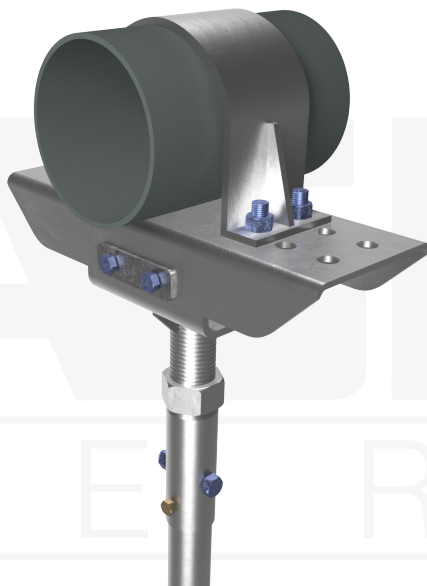
### 8" x 25" x 5/8" Formed Channel Bearing Plate & 3.13-Inch I.D. Collar

### Fits MH325BR(-6) Helical Piles

**Description:** MAGNUM® Pipe Support Caps consist of a collar tube with a bolt hole for connection to MAGNUM® helical piles and an adapter plate secured to a large diameter threaded bar that allows up to 3" of elevation adjustability and +/-2" of lateral adjustability. The unique design of this cap allows it to be used in pipe support applications where lateral loads will be applied to the top of the pile head, which generally cause bending that can only be resisted by the strength of the large threaded bar. MAGNUM® products are manufactured in the USA according to our ISO 9001 approved quality program. Structural capacities are developed according to AISC 360 considering an average design life of 75 years for spray galvanized steel in most soil conditions. Design and detailing of the piping system to which pipe support caps are attached varies by project and is the responsibility of the registered design professional.

| Specifications                    |   |
|-----------------------------------|---|
| Collar Tube                       | 0.31" x 3.13" I.D. ASTM A513, Fy = 65 ksi or Better   |
| End Effector                      | 8" x 25" x 5/8" Adapter Plate and 0.31 in. x 3.13 in I.D. Sleeve w/ 3.0"Ø Thread Adjustment |
| Pile Connection                   | (1) 1" SAE J429 Grade 8<br>Zinc Coated to ASTM B695/F1941                                   |
| Coating                           | Spray Galvanized per ASTM A780 (SG), Bare Steel (NG), or Epoxy Coated per ICC-ES AC228 (EP) |
| Compatibility                     | MH325BR(-6)   |
| Capacity                          |   |
| Ultimate Compression/<br>Tension  | 6 Tons  |
| Allowable Compression/<br>Tension | 2.5 Tons  |
| Allowable Moment                  | 4.5 kip-ft  |

**Notes:** Cap capacity is developed using the ASD design method and considers strength of collar, end effector, and pile connection. Capacity may be limited by the helical pile itself, bearing/pullout capacity of soil, or strength of the structure to which the cap is attached. Allowable moment capacity is excess capacity after maximum eccentricity and lateral loads have been taken into account. Allowable Lateral capacity is the capacity of this cap, actual capacity may be limited by pipe hold down\* or total lateral deflection limits.



Pipe Hold Down Sold Separately

**Installation Notes:** After installation of a MAGNUM® Helical Pile to the correct depth, torque, and capacity cut off the pile at the proper elevation; note pile must be set at +0"/-3.5" from planned elevation. If pile shaft is set higher than this elevation range due to reaching maximum torque or refusal, stop installation and cut-off the pile shaft at the proper elevation. Drill (1) 1-1/16" diameter hole through the shaft using a MAGNUM® drill template, place the cap over the shaft and secure with (1) 1" bolt. Snug tighten nut. Adjust to final elevation by turning plate as required. Tighten set screw to prevent wobble. Place pipe on support and adjust plate as necessary to install the pipe hold down (provided by others).

\*Pipe Hold Down: Fits EZ-Line pipe support part #SBA-01, CSB-01, GSB-01A&B, PRSB-01, PRSBC-01 &-02 & CSPB-01 for nominal pipe sizes: 3" thru 16". Note: MAGNUM® is not affiliated with EZ Line Pipe Support CO. LLC. Contact Magnum sales team for bolt hole patterns.

**MAGNUM®**  
PIERING  
designed to support

156 Circle Freeway Dr.  
Cincinnati, OH. 45246  
800-822-7437

[www.MagnumPiering.com](http://www.MagnumPiering.com)