

# MAGNUM® MHC1120-3B Wood Beam Cap

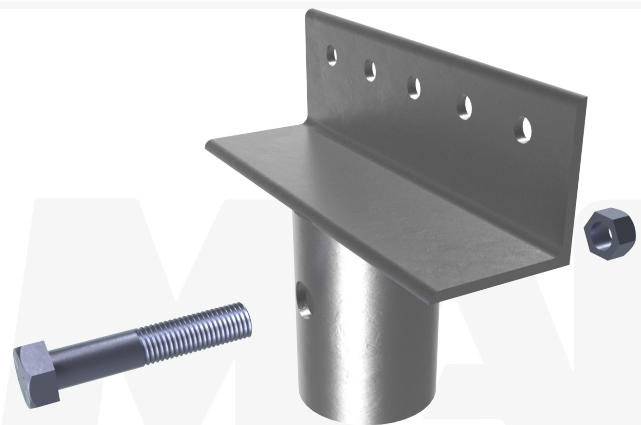
## Allowable Capacity - 8 Tons Compression / 8 Tons Tension

11" Long 3-1/2" x 3-1/2" x 1/4" Angle & 3.13-Inch I.D. Collar  
Fits MH313B, MH313BR & MH325B Helical Piles

**Description:** MAGNUM® Wood Beam Caps consist of a collar tube with a bolt hole for connection to MAGNUM® Helical Piles and an angle for attachment to a wood beam. MAGNUM® products are manufactured in the USA according to our ISO 9001 approved quality program. Structural capacities are developed according to AISC 360 considering an average design life of 75 years for bare steel in most soil conditions. Hot-dip galvanizing is available upon request. Design and detailing of the structure, to which bearing plate cap is attached varies by project and is the responsibility of the registered design professional including crushing strength and span of wood beam.

Specifications	
Collar Tube	0.25" x 3.13" I.D. ASTM A513, Fy = 65 ksi or Better
End Effector	3-1/2" x 3-1/2" x 1/4" – 11" Long Angle with holes for (5) 1/2" Lag Bolts
Pile Connection	(1) 7/8" Dia. SAE J429 Grade 5 Zinc Coated to ASTM B695/F1941
Coating	Galvanized per ASTM A153/A123 (G), Bare Steel (NG), or Epoxy Coated per ICC-ES AC228 (EP)
Compatibility	MH313B, MH313BR, MH325B
Capacity	
Ultimate Compression/ Tension	16 Tons / 16 Tons
Allowable Compression/ Tension	8 Tons / 8 Tons

**Notes:** Cap capacity is developed using the ASD design method and considers strength of collar, end effector, and pile connection. Capacity may be limited by the helical pile itself, bearing/pullout capacity of soil, or strength of the structure to which the cap is attached. Strength of the structure may be limited by crushing strength, span or bolt bearing on the wood beam.



**Installation Notes:** After installation of a MAGNUM® Helical Pile to the correct depth, torque, and capacity, cut-off the pile shaft at the proper elevation. Drill (1) 15/16" diameter hole through the shaft using a MAGNUM® drill template. Place the pile cap over the shaft and secure with (1) 7/8" bolt. Snug tighten nut. Place wood beam on cap angle and secure with 1/2" lag bolts as required for the project.



Lag Bolts Sold Separately

**MAGNUM®**  
PIERING  
designed to support

156 Circle Freeway Dr.  
Cincinnati, OH. 45246  
800-822-7437  
www.MagnumPiering.com