

MAGNUM® MHC1161-3B 6x6 Post Cap

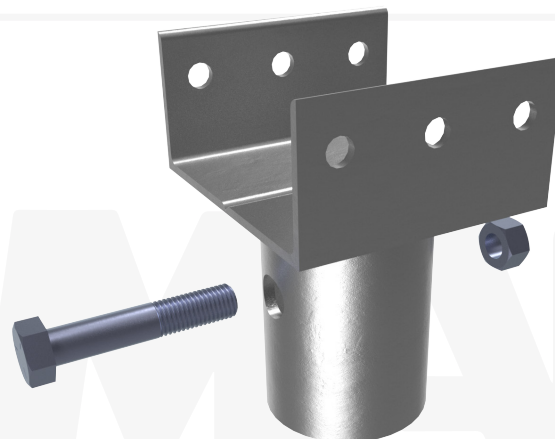
Allowable Capacity 16 Tons Compression / 16 Tons Tension

3" Tall 5-5/8" x 5-5/8" x 1/4" Post Base & 3.13-Inch I.D. Collar
Fits MH313B, MH313BR & MH325B Helical Piles

Description: MAGNUM® Wood Post Caps consist of a collar tube with bolt hole for connection to MAGNUM® Helical Piles and a pair of angles for attachment to the base of a wood post. MAGNUM® products are manufactured in the USA according to our ISO 9001 approved quality program. Structural capacities are developed according to AISC 360 considering an average design life of 75 years for bare steel in most soil conditions. Hot-dip galvanizing is available upon request. Design and detailing of the structure, to which bearing plate cap is attached varies by project and is the responsibility of the registered design professional including crushing strength, lateral bracing, and span of wood post.

Specifications	
Collar Tube	0.25" x 3.13" I.D. ASTM A513, Fy = 65 ksi or Better
End Effector	3" tall 5-5/8" x 5-5/8" x 1/4" Post Base with Holes for (6) 1/2" Lag Bolts
Pile Connection	(1) 7/8" SAE J429 Grade 5 Zinc Coated to ASTM B695/F1941
Coating	Galvanized per ASTM A153/A123 (G), Bare Steel (NG), or Epoxy Coated per ICC-ES AC228 (EP)
Compatibility	MH313B, MH313BR, MH325B
Capacity	
Ultimate Compression/ Tension	32 Tons / 32 Tons
Allowable Compression/ Tension	16 Tons / 16 Tons

Notes: Cap capacity is developed using the ASD design method and considers strength of collar, end effector, and pile connection. Capacity may be limited by the helical pile itself, bearing/pullout capacity of soil, or strength of the structure to which the cap is attached. Strength of the structure may be limited by crushing strength, span or bolt bearing on the wood column.



Installation Notes: After installation of a MAGNUM® Helical Pile to the correct depth, torque, and capacity, cut-off the pile shaft at the proper elevation. Drill (1) 15/16" hole using a MAGNUM® drill template. Place the pile cap over the shaft and secure with (1) 7/8" bolt. Snug tighten nut. Place wood post on post base and secure with 1/2" lag bolts as required for the project.



Lag Bolts Sold Separately

MAGNUM®
PIERING
designed to support

156 Circle Freeway Dr.
Cincinnati, OH. 45246
800-822-7437
www.MagnumPiering.com