

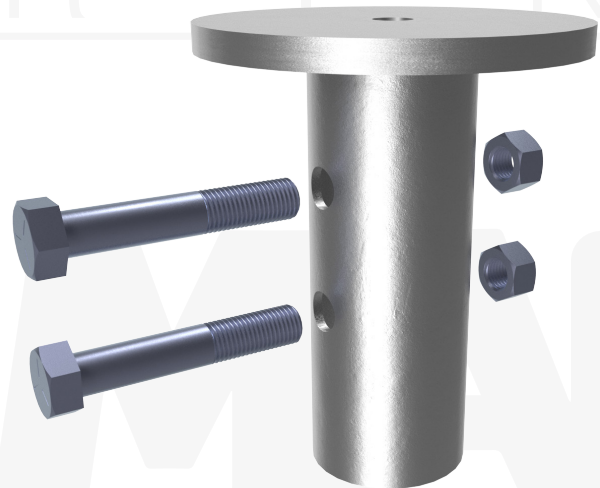
# MAGNUM® MHC1304-5O12B2 Circular Plate Cap

## Allowable Capacity 74 Tons Compression / 28 Tons Tension

12"Ø x 7/8" Bearing Plate with (1) #10 Nut & 5.75-Inch I.D. Collar  
Fits MH530, MH536, MH542 & MH547 Helical Piles

**Description:** MAGNUM® Circular Plate Caps consist of a collar tube with bolt holes for connection to MAGNUM® helical piles and a circular bearing plate with an integrated nut. MAGNUM® products are manufactured in the USA according to our ISO 9001 approved quality program. Structural capacities are developed according to AISC 360 considering an average design life of 75 years for hot-dip galvanized steel in most soil conditions. Bare steel is available upon request. Design and detailing of the structure, to which bearing plate cap is attached varies by project and is the responsibility of the registered design professional.

Specifications	
Collar Tube	0.44" x 5.75" I.D. ASTM A252, Fy = 70 ksi or Better
End Effector	12"Ø x 7/8" Steel Bearing Plate with (1) #10 Nut
Pile Connection	2) 1-1/2" SAE J429 Grade 5 Zinc Coated to ASTM B695/F194
Coating	Galvanized per ASTM A153/A123 (G), Bare Steel (NG), or Epoxy Coated per ICC-ES AC228 (EP)
Compatibility	MH530-6, MH536-6, MH542-6, MH547-6
Capacity	
Ultimate Compression/ Tension	148 Tons / 56 Tons
Allowable Compression/ Tension	74 Tons / 28 Tons



**Notes:** Cap capacity is developed using the ASD design method and considers strength of collar, end effector, and pile connection. Capacity may be limited by the helical pile itself, bearing/pullout capacity of soil, or strength of the structure to which the cap is attached.



**Installation Notes:** After installation of a MAGNUM® Helical Pile to the correct depth, torque, and capacity, cut-off the pile shaft at the proper elevation. Drill (2) 1-9/16" holes through the shaft using a MAGNUM® drill template, place the cap over the shaft and secure with (2) 1-1/2" bolts. Snug tighten nuts. Alternatively, drilling through pile may be omitted and plug welds may be used to secure cap to pile in place of bolt(s), see MAGNUM® Technical Bulletin TB004. Ensure direct bearing of plate on shaft. Affix the structure to the pile cap by installing a threaded rod through the connection point into the integrated nut in the cap. Connection to structures vary by project, tightness and fit-up requirements are the responsibility of the registered design professional.

U.S. Patent 9,365,998

**MAGNUM®**  
PIERING  
designed to support

156 Circle Freeway Dr.  
Cincinnati, OH. 45246  
800-822-7437  
www.MagnumPiering.com