

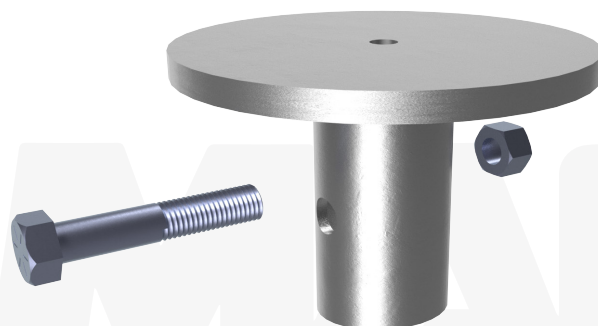
MAGNUM® MHC1305-3N11BR1 Circular Plate Cap

Allowable Capacity 25 Tons Compression / 18 Tons Tension

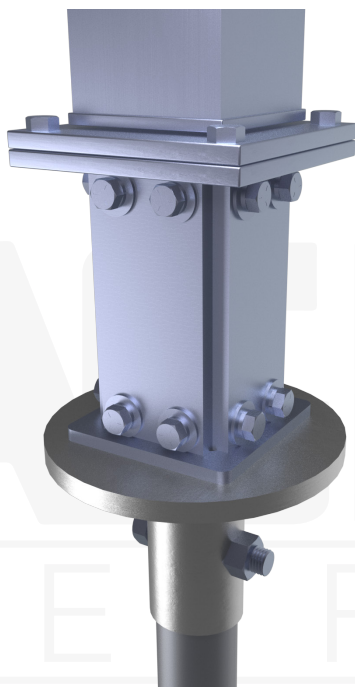
12"Ø x 3/4" Bearing Plate & 3.13-Inch I.D. Collar
Fits MH325BR(-6) Helical Piles

Description: MAGNUM® Circular Plate Caps consist of a collar tube with a bolt hole for connection to MAGNUM® helical piles and a circular bearing plate. The circular plate caps are manufactured in the USA according to our ISO 9001 approved quality program. Structural capacities are developed according to AISC 360 considering an average design life of 75 years for bare steel in most soil conditions. Hot-dip galvanizing is available upon request. Design and detailing of the structure, to which bearing plate cap is attached varies by project and is the responsibility of the registered design professional.

Specifications	
Collar Tube	0.31" x 3.13" I.D. ASTM A513, Fy = 65 ksi or Better
End Effector	12"Ø x 3/4" Steel Bearing Plate
Pile Connection	(1) 1" SAE J429 Grade 8 Zinc Coated to ASTM B695/F194
Coating	Galvanized per ASTM A153/A123 (G), Bare Steel (NG), or Epoxy Coated per ICC-ES AC228 (EP)
Compatibility	MH325BR(-6)
Capacity	
Ultimate Compression/ Tension	50 Tons / 36 Tons
Allowable Compression/ Tension	25 Tons / 18 Tons



Notes: Cap capacity is developed using the ASD design method and considers strength of collar, end effector, and pile connection. Capacity may be limited by the helical pile itself, bearing/pullout capacity of soil, or strength of the structure to which the cap is attached.



Installation Notes: After installation of a MAGNUM® Helical Pile to the correct depth, torque, and capacity, cut-off the pile shaft at the proper elevation. Drill (1) 1-1/16" hole through the shaft using a MAGNUM® drill template. Place the pile cap over the shaft and secure with (1) 1" bolt. Snug tighten nut. Alternatively, drilling through pile may be omitted and plug welds may be used to secure cap to pile in place of bolts, see MAGNUM® Technical Bulletin TB004.

U.S. Patent 9,365,998

MAGNUM®
PIERING
designed to support

156 Circle Freeway Dr.
Cincinnati, OH. 45246
800-822-7437
www.MagnumPiering.com