

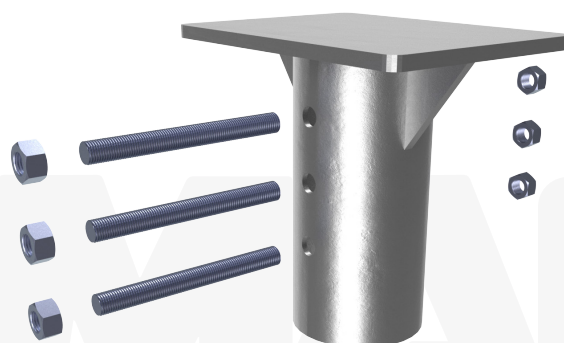
MAGNUM® MHC1350-9P24B3 Gusseted Cap

Allowable Capacity 112 Tons Compression / 112 Tons Tension

24" x 24" x 1" Bearing Plate & 9.85-Inch I.D. Collar
Fits MH939 Helical Piles

Description: MAGNUM® Gusseted Plate Caps consist of a collar tube with a bolt holes for connection to MAGNUM® helical piles and a stiffened steel bearing plate. MAGNUM® products are manufactured in the USA according to our ISO 9001 approved quality program. Structural capacities are developed according to AISC 360 considering an average design life of 75 years for bare steel in most soil conditions. Hot-dip galvanizing is available upon request. Design and detailing of the structure, to which bearing plate cap is attached varies by project and is the responsibility of the registered design professional..

Specifications	
Collar Tube	0.45" x 9.85" I.D. ASTM A252, Fy = 65 ksi or Better
End Effector	12" x 12" x 1" Steel Bearing Plate with Support Gussets
Pile Connection	(3) 1-1/2" ASTM A193 B7 Zinc Coated to ASTM B695/F194
Coating	Galvanized per ASTM A153/A123 (G), Bare Steel (NG), or Epoxy Coated per ICC-ES AC228 (EP)
Compatibility	MH939-6
Capacity	
Ultimate Compression/ Tension	224 Tons / 224 Tons
Allowable Compression/ Tension	112 Tons / 112 Tons



Notes: Cap capacity is developed using the ASD design method and considers strength of collar, end effector, and pile connection. Capacity may be limited by the helical pile itself, bearing/pullout capacity of soil, or strength of the structure to which the cap is attached.

Installation Notes: After installation of a MAGNUM® Helical Pile to the correct depth, torque, and capacity, cut-off the pile shaft at the proper elevation. Drill (3) 1-9/16" holes through the shaft using a MAGNUM® drill template, place the cap over the shaft and secure with (3) 1-1/2" bolts. Snug tighten nuts. Alternatively, drilling through pile may be omitted and plug welds may be used to secure cap to pile in place of bolt(s), see MAGNUM® Technical Bulletin TB004. Ensure direct bearing of plate on shaft.



MAGNUM®
PIERING
designed to support

156 Circle Freeway Dr.
Cincinnati, OH. 45246
800-822-7437
www.MagnumPiering.com