

MAGNUM® MHC1545-3N68B Panel Brace Cap

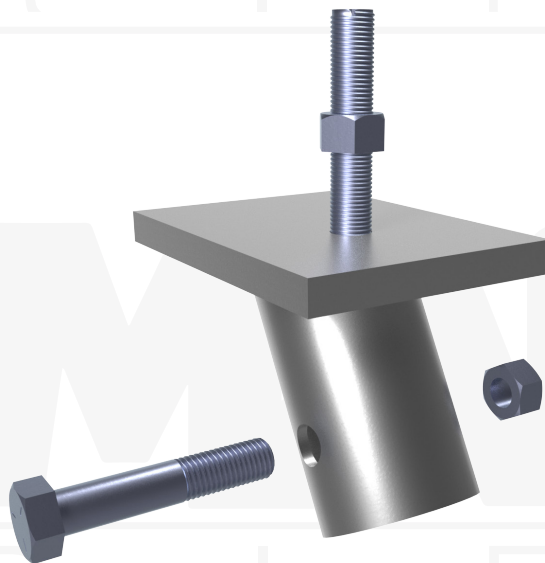
Allowable Capacity 16 Tons Compression / 16 Tons Tension

6" x 8" x 3/4" Plate Tilted 45° with 3/4" Stud & 3.13-Inch I.D. Collar
Fits MH313B, MH313BR & MH325B Helical Piles

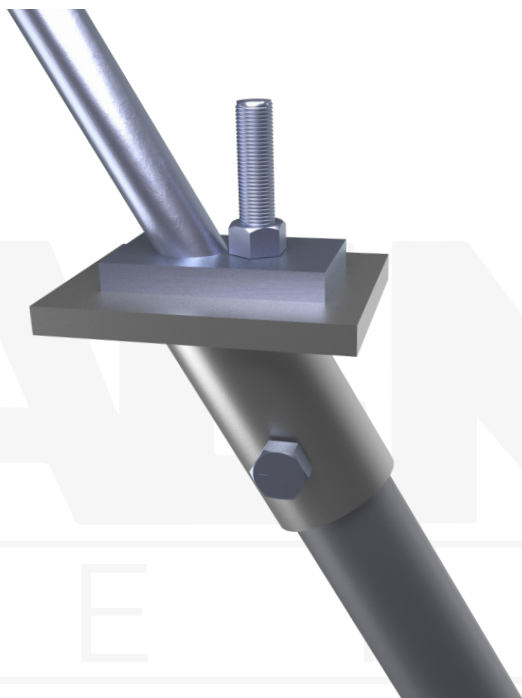
Description: MAGNUM® Panel Brace Caps consist of a collar tube with bolt holes for connection to MAGNUM® helical piles and tilted steel plate with a 3/4" stud for attachment to common pre-cast concrete or tilt-up panel braces. MAGNUM® products are manufactured in the USA according to our ISO 9001 approved quality program. Structural capacities are developed according to AISC 360 considering an average design life of 75 years for bare steel in most soil conditions. Hot-dip galvanizing is available upon request. Application of the cap varies by project and is the responsibility of registered design professional including brace attachment, brace spacing, and brace height on the wall, as applicable.

Specifications	
Collar Tube	0.25" x 3.13" I.D. ASTM A513, Fy = 65 ksi or Better
End Effector	6" x 8" x 3/4" Steel Bearing Plate Tilted 45° with 3/4" Threaded Attachment Stud
Pile Connection	(1) 7/8" SAE J429 Grade 5 Zinc Coated to ASTM B695/F1941
Coating	Galvanized per ASTM A153/A123 (G), Bare Steel (NG), or Epoxy Coated per ICC-ES AC228 (EP)
Compatibility	MH313B, MH313BR, MH325B
Capacity	
Ultimate Compression/Tension	32 Tons / 32 Tons
Allowable Compression/Tension	16 Tons / 16 Tons

Notes: Cap capacity is developed using the ASD design method and considers strength of collar, end effector, and pile connection. Capacity may be limited by the helical pile itself, bearing/pullout capacity of soil, or strength of the structure to which the cap is attached.



Installation Notes: After installation of a MAGNUM® Helical Pile to the correct depth, torque, and capacity, cut-off the pile shaft at the proper elevation. Drill (1) 15/16" hole through the shaft using a MAGNUM® drill template, place the cap over the shaft and secure with (1) 7/8" bolt. Snug tighten nut. Alternatively, drilling through pile may be omitted and plug welds may be used to secure cap to pile in place of bolt(s), see MAGNUM® Technical Bulletin TB004. Ensure plate is level prior to drilling through shaft or plug welding cap connection.



MAGNUM®
PIERING
designed to support

156 Circle Freeway Dr.
Cincinnati, OH. 45246
800-822-7437
www.MagnumPiering.com