

# MAGNUM® MHC2161-3T1 6x6 Post Clamp Cap

## Allowable Capacity 16 Tons Compression / 0.5 Tons Tension

3" Tall 5-5/8" x 5-5/8" x 1/4" Post Base & 3.13-Inch I.D. Collar

Fits MH313B, MH313BR, MH325B & MH325BR(-6) Helical Piles

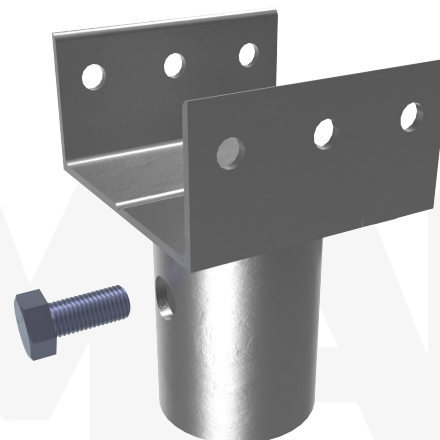
**Description:** MAGNUM® Wood Post Caps consist of a collar tube with bolt hole for connection to MAGNUM® Helical Piles and a pair of angles for attachment to the base of a wood post. MAGNUM® products are manufactured in the USA according to our ISO 9001 approved quality program. Structural capacities are developed according to AISC 360 considering an average design life of 75 years for bare steel in most soil conditions. Hot-dip galvanizing is available upon request. Design and detailing of the structure, to which bearing plate cap is attached varies by project and is the responsibility of the registered design professional including crushing strength, lateral bracing, and span of wood post.

Specifications	
Collar Tube	0.25" x 3.13" I.D. ASTM A513, Fy = 65 ksi or Better
End Effector	3" tall 5-5/8" x 5-5/8" x 1/4" Post Base with Holes for (6) 1/2" Lag Bolts
Pile Connection	(1) 3/4"-16 SAE J429 Grade 8 Zinc Coated to ASTM B695/F1941 Installation Torque 50 ft-lb min, 60ft-lb max
Coating	Galvanized per ASTM A153/A123 (G), Bare Steel (NG), or Epoxy Coated per ICC-ES AC228 (EP)
Compatibility	MH313B, MH313BR, MH325B, MH325BR(-6)
Capacity	
Ultimate Compression/ Tension	32 Tons / 1 Ton
Allowable Compression/ Tension	16 Tons / 0.5 Tons

**Notes:** Cap capacity is developed using the ASD design method and considers strength of collar, end effector, and pile connection. Capacity may be limited by the helical pile itself, bearing/pullout capacity of soil, or strength of the structure to which the cap is attached. Strength of the structure may be limited by crushing strength, span or bolt bearing on the wood column.



Lag Bolts Sold Separately



**Installation Notes:** Protect pile cap and bolt from weather prior to installation. After installation of a MAGNUM® Helical Pile to the correct depth, torque, and capacity, cut-off the pile shaft square at the proper elevation. Place the pile cap over the shaft and secure with (1) 3/4"-16 bolt. Ensure direct bearing of post base on shaft. Tighten bolt to a minimum torque of 50 ft-lbs. Do not exceed 60 ft-lbs. Place wood post and fasten with 1/2" lag screws.

\* Post base must directly bear on shaft for compression capacity shown.

\*\* Bolts must be new, clean, dry and free of any dust, rust or paint. Threaded holes must be clean, dry and free of any surface dust, rust, paint, or galvanizing for tension capacity shown. Manufacture applied lubricating wax on bolts is acceptable.

**MAGNUM®**  
PIERING  
designed to support

156 Circle Freeway Dr.  
Cincinnati, OH. 45246  
800-822-7437  
[www.MagnumPiering.com](http://www.MagnumPiering.com)