

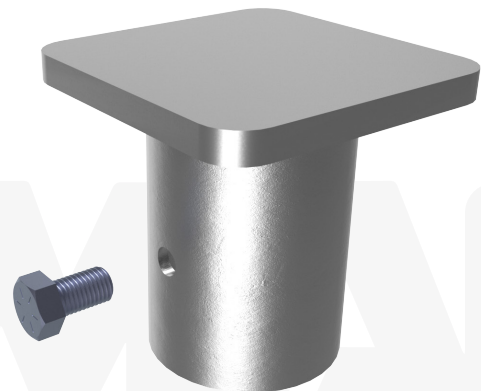
MAGNUM® MHC2300-4N88T1 Clamp Cap

Allowable Capacity 55 Tons Compression / 1 Ton Tension

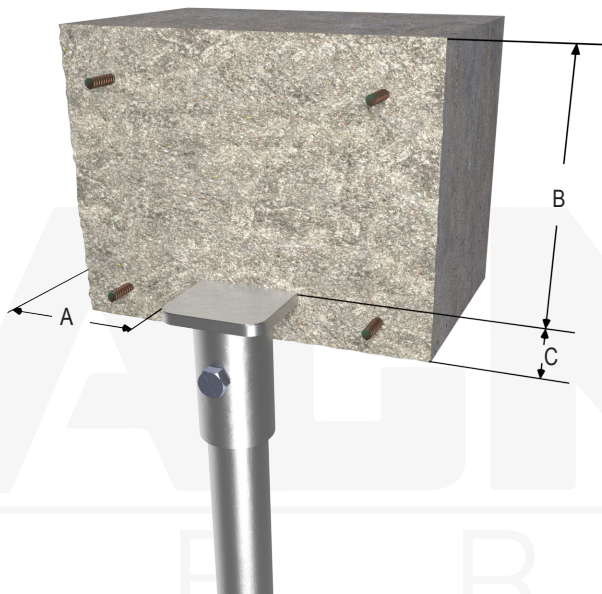
8" x 8" x 3/4" Bearing Plate & 4.63-Inch I.D. Collar
Fits MH429 & MH434 Helical Piles

Description: MAGNUM® Clamp Caps consist of a collar tube with threaded bolt hole for clamp connection to MAGNUM® helical piles and steel bearing plate for embedment in cast-in-place reinforced concrete. MAGNUM® products are manufactured in the USA according to our ISO 9001 approved quality program. Structural capacities are developed according to AISC 360 and ACI 318 considering an average design life of 75 years for bare steel in most soil conditions. Hot-dip galvanizing is available upon request. Design and detailing of the structure to which bearing plate cap is embedded in varies by project and is the responsibility of the registered design professional.

Specifications	
Collar Tube	0.31" x 4.63" I.D. ASTM A252, Fy = 65 ksi or Better
End Effector	8" x 8" x 3/4" Steel Bearing Plate
Pile Connection	(1) 7/8"-9 SAE J429 Grade 8 Zinc Coated to ASTM B695/F1941 Installation Torque 75 ft-lb min, 100 ft-lb max
Coating	Galvanized per ASTM A153/A123 (G), Bare Steel (NG), or Epoxy Coated per ICC-ES AC228 (EP)
Compatibility	MH429(-6), MH434(-6)
Capacity	
Ultimate Compression/ Tension	110 Tons / 2 Tons
Allowable Compression/ Tension	55 Tons / 1 Ton



Notes: Cap capacity is developed using the ASD design method and considers strength of collar, end effector, and pile connection. Capacity may be limited by the helical pile, bearing/pullout capacity of soil, or strength of the concrete the cap is embedded in.



Installation Notes: After installation of a MAGNUM® Helical Pile to the correct depth, torque, and capacity, cut-off the pile shaft at the proper elevation. Place the cap over the shaft and secure with (1) 3/4" fine thread bolt. Tighten to specified torque. Ensure direct bearing of plate on shaft. Place reinforcing steel, cast concrete and consolidate around the pile cap per project requirements.

* Plate must directly bear on shaft for compression capacity shown.
** Bolt must be new, clean, dry and free from any dust, rust or paint & threaded hole must be clean, dry and free of any surface dust, rust, paint or galvanizing for tension capacity shown. Manufacture applied lubricating wax on bolts is acceptable.

A - As Required for Shear (Min. 4" per IBC)
B - As required for Compression. See pages 184-185.
C - As Required for Tension (Min. 3" per IBC). See pages 184-185.

MAGNUM®
PIERING
designed to support

156 Circle Freeway Dr.
Cincinnati, OH. 45246
800-822-7437
www.MagnumPiering.com