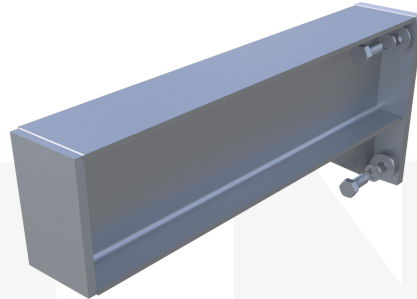


MAGNUM® MMO818B Outrigger

W8x18 Beam and (2) 7/8" End Plates with (4) Holes Each for 7/8" - 9 UNC Bolts

Description: The Magnum® MMO818B Moment Frame Outrigger consists of a W8x18 wide flange beam with a 7/8" end plate with gussets, and another 7/8" end plate fit to beam cross section. The gusseted end plate has (4) 15/16" bolt holes for connection to a Magnum Moment Frame Column. Allowable lengths vary and are the responsibility of the registered design professional.

Specifications	
Shape	W8x18 Wide Flange Beam ASTM A992 50 ksi, or Equivalent
I	New = 61.9 in ⁴
A _g	New = 5.26 in ²
S	New = 15.2 in ³
Length	Custom
Bolts	(4) 7/8"-9 UNC SAE J429 Grade 5 Zinc Coated to ASTM B695/F1941
Connection	Torque Bolts to 365 ft-lbs
Surface Coating	Galvanized per ASTM A153/A123 (G)
Zinc Coated to ASTM B695/F1941	Galvanized per ASTM A153/A123 (G)



Column, Base Plate, and Concrete
Anchor Bolts Sold Separately

Installation Notes: Magnum MMO818B Moment Frame Outriggers are installed onto pre-installed Moment Frame Columns. Beams are hoisted into position, attach each beam with (4) 7/8" - 9 UNC bolts and lock washers, torque to 365 ft-lbs. Continue until all outriggers are installed. Architectural finishing varies by project. Ramset or PAF is acceptable for use on securing finishes to frame.

MAGNUM®
PIERING
designed to support

156 Circle Freeway Dr.
Cincinnati, OH. 45246
800-822-7437
www.MagnumPiering.com